

TCP

TOOL TIGHTENING FIXTURE

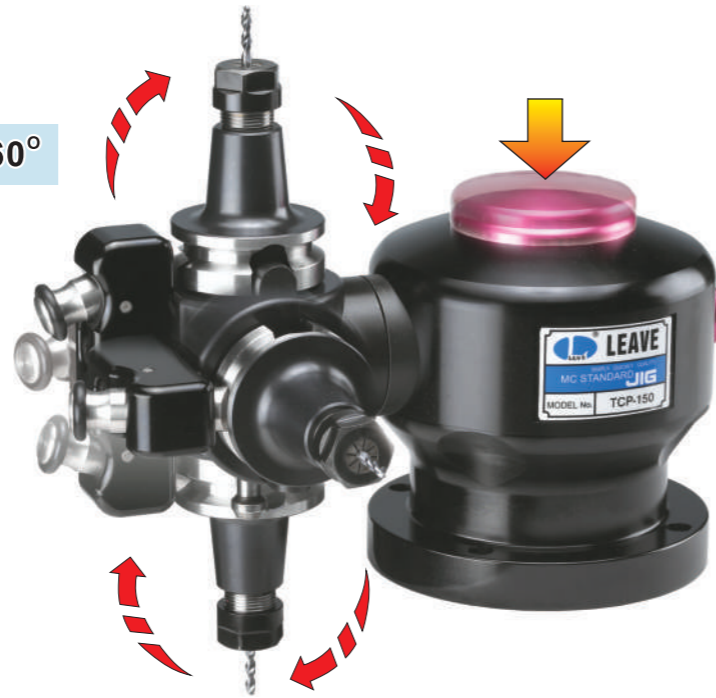
Tool Holder is Changeable

Easy assemble and dis-assemble tool holder from main body while pressing the valve on the right hand side of the unit.



Tool Holder is Adjustable up to 360°

Easily adjusts tool holders for a full 360° (45° increments) by pushing the valve on the top of the tightening fixture.



4pcs of M10x40mm bolt can be fastened from the top of the mounting flange or 4pcs of M12 bolt can be fastened from the bottom of the mounting

Tightening Fixture Main Body



Model No.	kg
TCP-150	6

Tool Holder

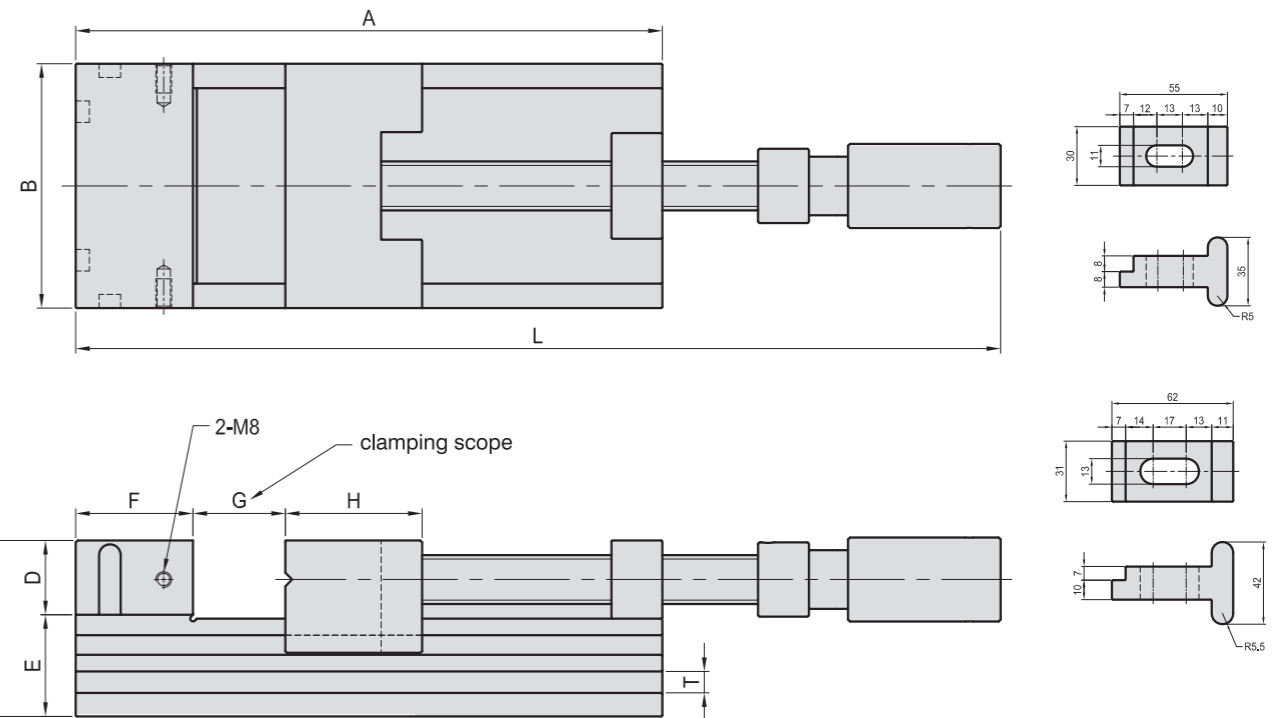
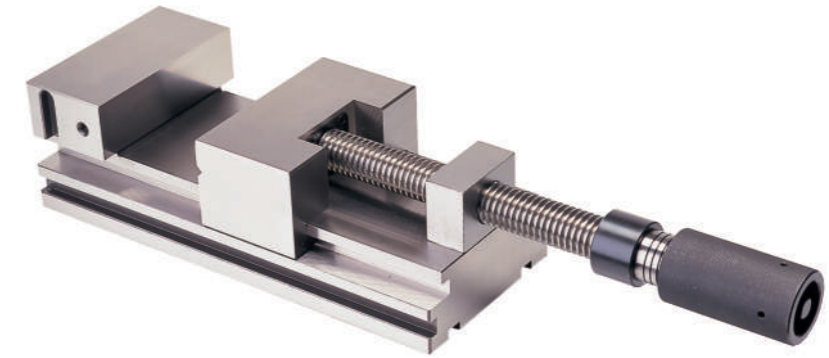


Model No.	kg	Model No.	kg
TCP-BT30	2.3	TCP-HSK-A-100	3.8
TCP-BT40	2.8	TCP-HSK-E-25	2.3
TCP-BT50	4.8	TCP-HSK-E-32	2.5
TCP-HSK-A-40	3.3	TCP-HSK-E-40	2.8
TCP-HSK-A-63	2.3	TCP-HSK-E-50	3.0
TCP-HSK-A-80	3.5	TCP-HSK-F-63	3.2

PGV

PGV PRECISION HYDRAULIC VISE

- Super precision: // ±0.005 / 100mm
⊥ ±0.005 / 100mm
- Hardness: HRC 58°~60°
- Application: Multifunction tool makers vise, ideally suited for: inspection, grinding or edm work.



Model No.	A	B	C	D	E	F	G	H	L		T	Material	kg
									MIN	MAX			
PGV-100	220	100	80	40	40	40	0~100	50	344	455	9 x 7	SNCM21	10.0
PGV-100N									SKS3				
PGV-125	300	125	90	40	50	60	0~165	70	420	590	11 x 7	SNCM21	19.5
PGV-125N									SKS3				

BP

BPA

BC

CP

SU

PT

SVF

ALV

OK-
VISE

JER-
GENS

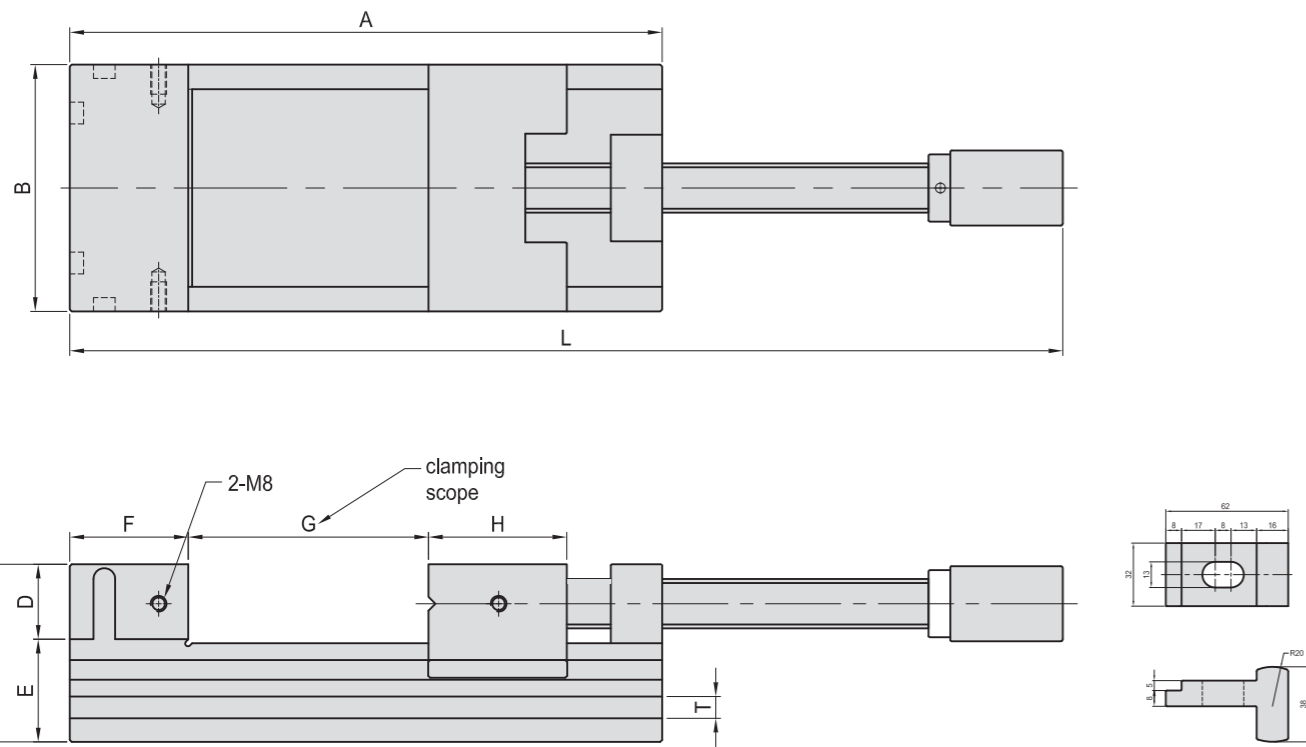
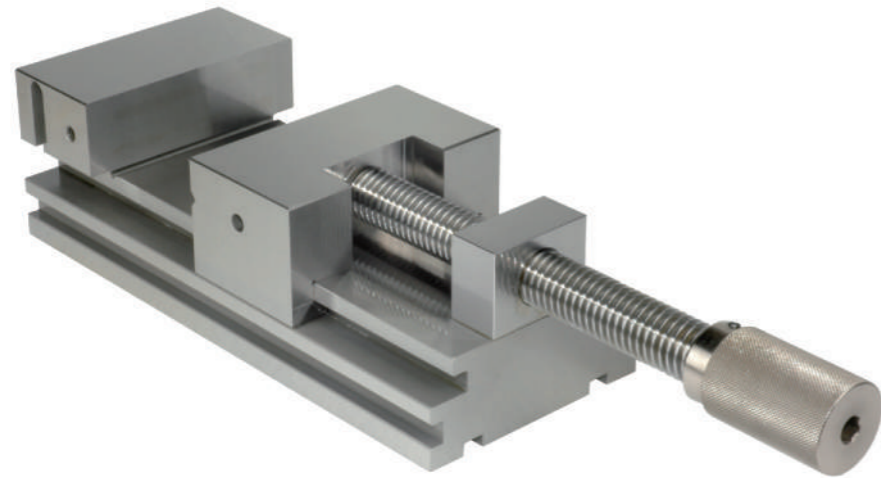
OTHER

Column
for
Technical
Data

PGV

TOOL MAKER VISE

- Super precision: // $\pm 0.005 / 100\text{mm}$
 $\perp \pm 0.005 / 100\text{mm}$
- Hardness: HRC 58°~60°
- Material: SKS3
- Application: Multifunction tool makers vise, ideally suited for: inspection, grinding or edm work.

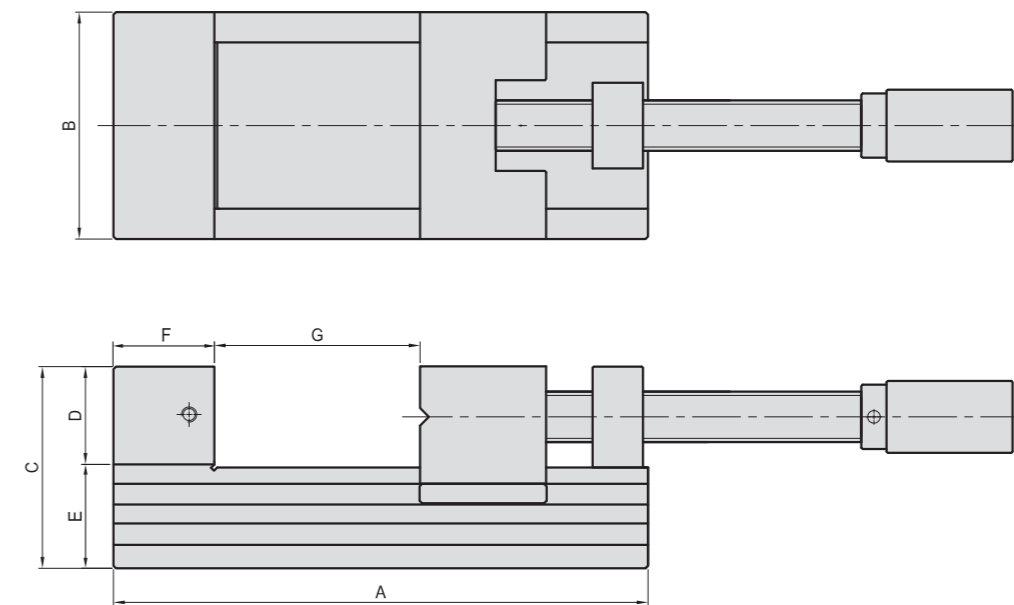
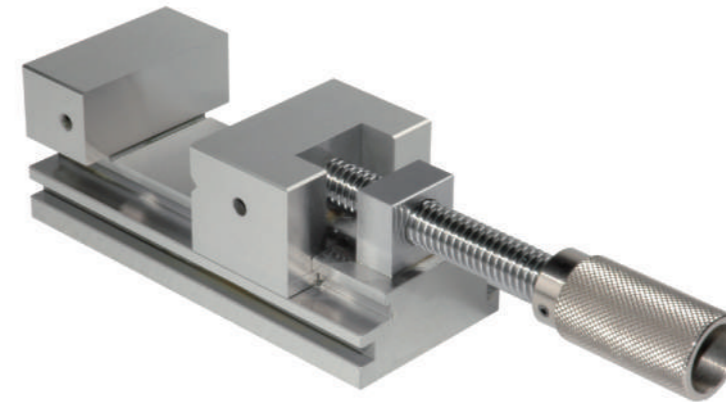


Model No.	A	B	C	D	E	F	G	H	L		T	kg
									MIN	MAX		
PGV-125M	300	125	90	40	50	60	0~165	70	382	546	11 x 7	19

GVS

SUPER PRECISION TOOL MAKER VISE

- Super precision: // $\pm 0.003 / 100\text{mm}$
 $\perp \pm 0.005 / 100\text{mm}$
- Hardness: HRC 58°~60°
- Material: SKS3



Model No.	A	B	C	D	E	F	G	kg
GVS-AS60	95	60	50	25	25	26.0	0~30	1.7
GVS-AS70	165	70	62	30	32	33.0	0~80	4.5
GVS-AS90	212	90	80	40	40	41.2	0~120	8.5

BP

BPA

BC

CP

SU

PT

SVF

ALV

OK-
VISE

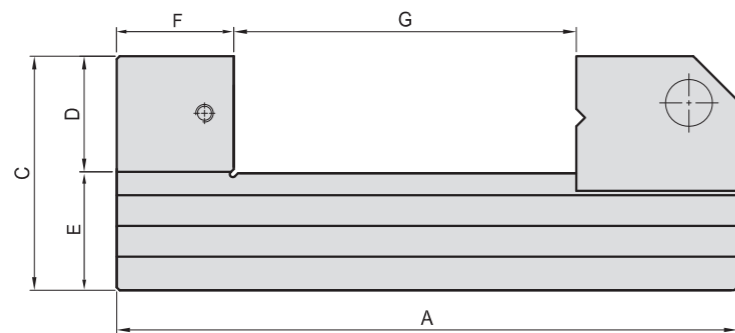
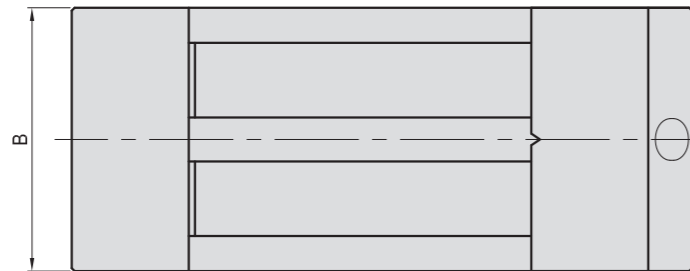
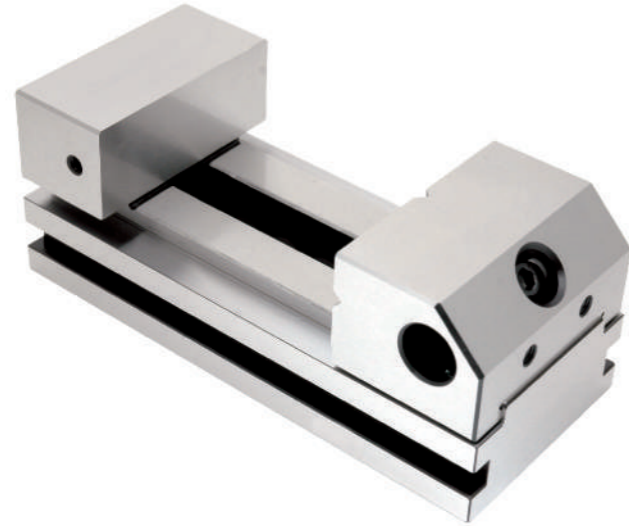
JER-
GENS

OTHER

Column
for
Technical
Data

SUPER PRECISION TOOL MAKER VISE

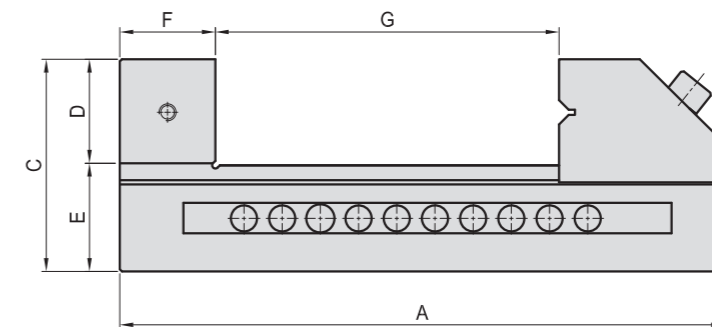
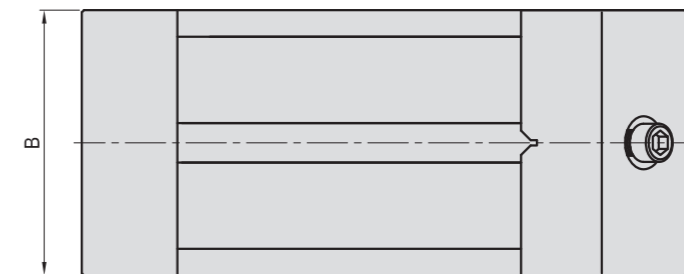
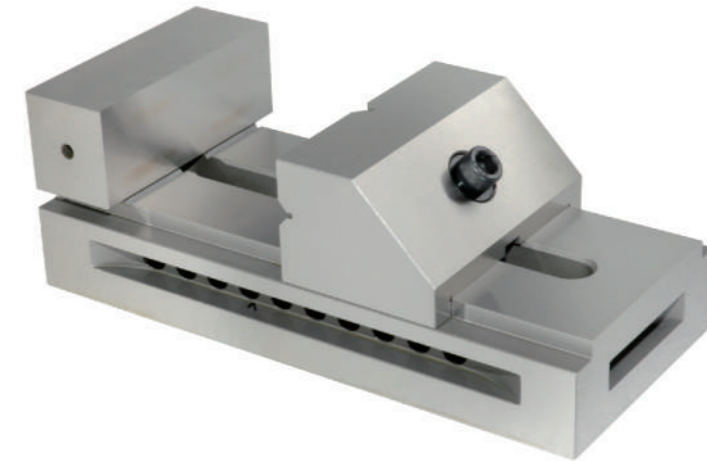
- Super precision: // $\pm 0.003 / 100\text{mm}$
 $\perp \pm 0.005 / 100\text{mm}$
- Hardness: HRC 58°~60°
- Material: SKS3



Model No.	A	B	C	D	E	F	G	kg
GVS-SV70	160	70	62	30	33	33.0	0~80	3.3
GVS-SV90	212	90	80	40	40	40.5	0~117	8.3

TOOL MAKER VISE (LARGE)

- Super precision: // $\pm 0.003 / 100\text{mm}$
 $\perp \pm 0.005 / 100\text{mm}$
- Hardness: HRC 58°~60°
- Material: SKS3



Model No.	A	B	C	D	E	F	G	kg
GVS-VS50	285	125	100	50	50	45	0~160	18

BP

BPA

BC

CP

SU

PT

SVF

ALV

OK-VISE

JER-GENS

OTHER

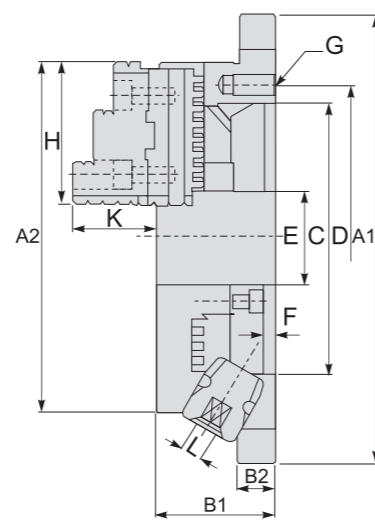
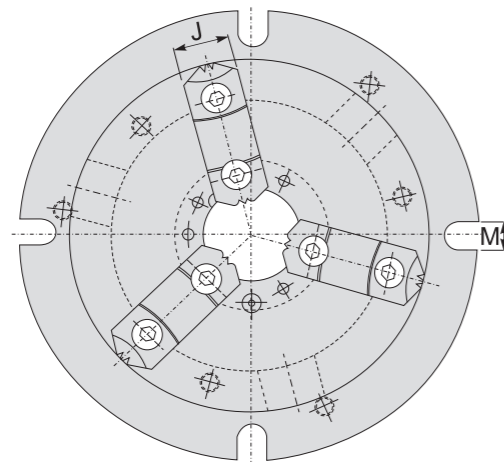
Column for Technical Data



NBK

ROUND SUPER THIN CHUCK

- The angle between "HANDLE" and "BASE OF CHUCK" is 30 degree, therefore, it is much more convenient for "HANDLE" rotation.
- This "POWER SUPER THIN" design of chuck may increase the "allowable length" of machining operation.
- The flanged design makes it easy to load.
- "POWERFUL TYPE" design can be used with hard or soft jaws.

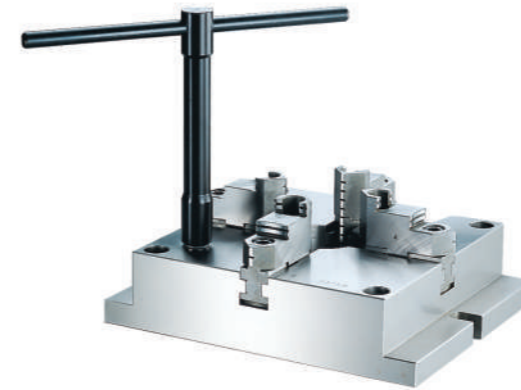


SPEC./MODEL	A1	A2	B1	B2	C	D	E	F	G	H	J	K	L	M	kg	External	Internal
NBK-6	220	170	58	18	130	147	45	6	3-M10	68	26	40	10	13	11.0	φ 8-φ 160	φ 48-φ 150
NBK-8	270	210	65	20	155	172	60	6	3-M10	82	28	45	11	13	19.5	φ 11-φ 200	φ 62-φ 190
NBK-10	315	255	73	20	190	210	80	6	3-M12	93	32	52	12	16	29.5	φ 12-φ 250	φ 72-φ 240
NBK-12	370	305	80	22	250	285	105	6	3-M12	117	40	59	14	18	42.5	φ 15-φ 300	φ 86-φ 290

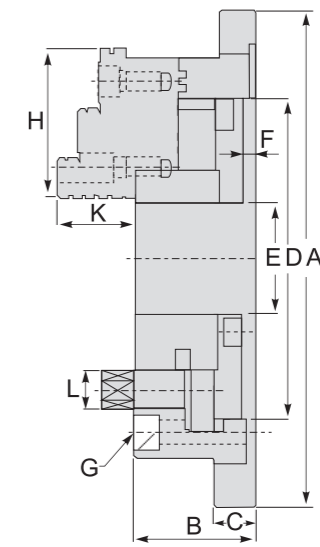
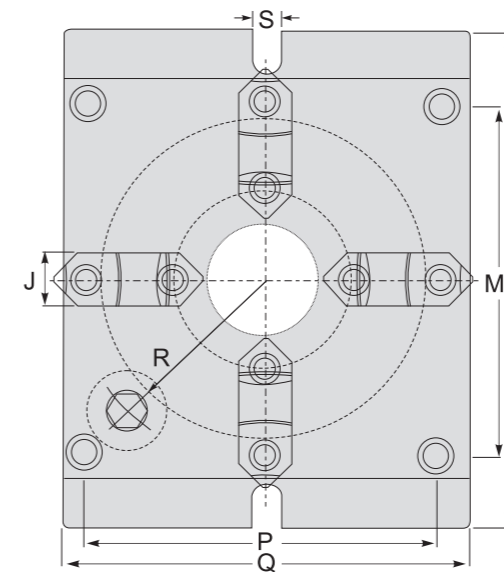


MCA

SUPER THIN SQUARE CHUCKS



- End-surface Clamping design
- Super thin design
- Convex design
- Unified height for reference point
- Alignment key on bottom of chuck.
- Soft-jaws are available
- MCA square chucks



SPEC./MODEL	A	B	C	D	E	F	G	H	J	K	L	M	N	P	Q	R	S	Max. Dia Gripped by		kg
																		external	internal	
MCA-6	215	57	18	130	40	5	4-M10	68	26	39	14	144	165	144	165	66	18	φ 4-φ 128	φ 55-φ 128	13.7
MCA-8	250	65	20	160	55	5	4-M12	82	28	43	17	174	200	174	200	83	18	φ 5-φ 162	φ 62-φ 162	21.5
MCA-10	310	72	22	200	70	6	4-M14	93	32	50	21	218	250	218	250	103	18	φ 6-φ 200	φ 72-φ 200	35.6
MCA-12	380	85	25	260	100	7	4-M16	117	40	56	23	274	310	274	310	135	22	φ 10-φ 265	φ 90-φ 265	61.7

BP

BPA

BC

CP

SU

PT

SVF

ALV

OK-
VISE

JER-
GENS

OTHER

Column
for
Technical
Data

GP-102

GROUND PARALLEL SET

MK

CLAMPING KITS WITH METAL RACKS

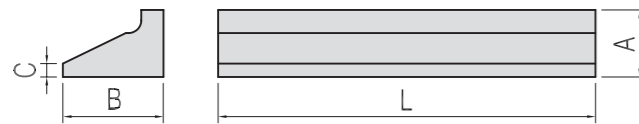


- Material: S45C(JIS) / CK45(DIN)
- Hardness: HRC 45°
- Accuracy: A ± 0.01
B ± 0.01
C ± 0.5

BASE



PARTS



Model No.	BASE SIZE			PARTS SIZE				kg (1)
	A	B	C	A	B	C	L	
GP102-05	5	16	100	-	-	-	-	1 SET/11.6
GP102-06	6	18	100	-	-	-	-	
GP102-08	8	24	100	-	-	-	-	
GP102-10	10	30	100	-	-	-	-	
GP102-12	12	36	150	-	-	-	-	
GP102-14	14	48	150	-	-	-	-	
GP102-18	18	60	150	-	-	-	-	
GP102-22	22	62	150	-	-	-	-	
GP102-24				15	31	2.5	200	



MODEL NO.	Fit T-Type Groove	Bolts	kg
MK-1210	12	M10	8.0
MK-1412	14	M12	9.5
MK-1614	16	M14	10.5
MK-1816	18	M16	19.0
MK-2018	20	M18	21.0

Kind	Specification
	FLANGE NUT 6 PCS
	EXTENSION NUT 4 PCS
	CLAMPING STUD 75,100,125,150,175,200 SIX KIND / EACH 4 PCS
	STEP BLOCK THREE KIND / EACH 4 PCS
	STEP CLAMP THREE KIND / EACH 2 PCS
	T-SLOT NUT 6 PCS
TOTAL : 58 PCS	

BP

BPA

BC

CP

SU

PT

SVF

ALV

OK-
VISE

JER-
GENS

OTHER

Column
for
Technical
Data



Lined writing area on the left page.

Lined writing area on the right page.

BP

BPA

BC

CP

SU

PT

SVF

ALV

OK-
VISE

JER-
GENS

OTHER

Column
for
Technical
Data



A series of horizontal blue lines spanning the width of the page, providing a template for writing or drawing.