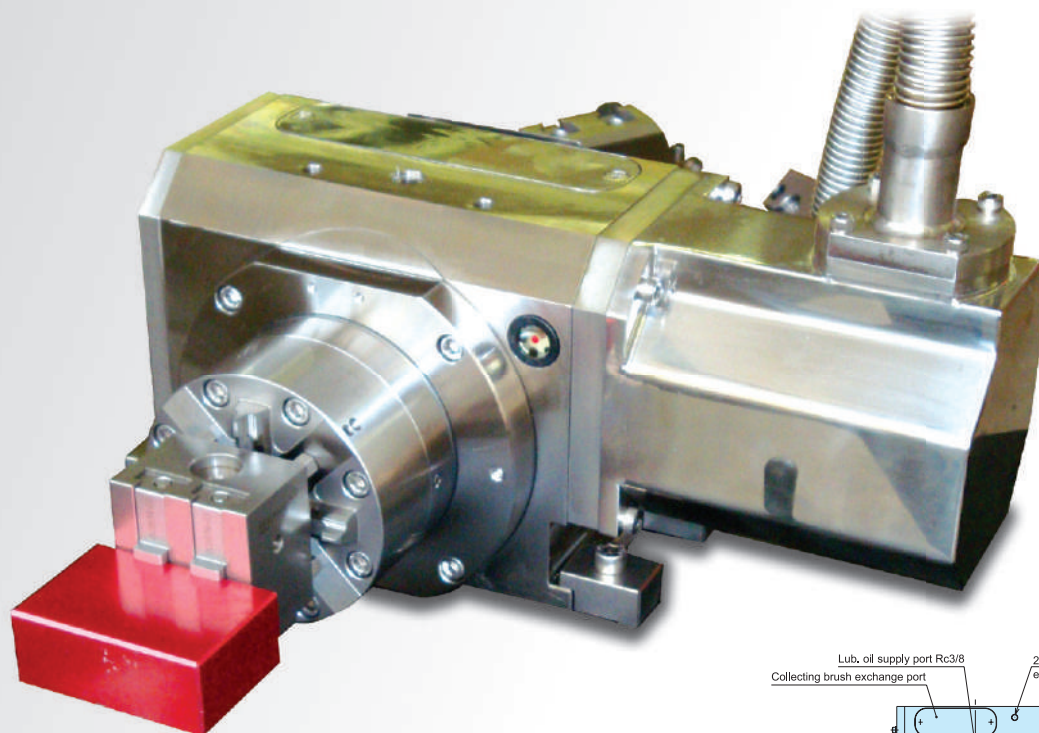
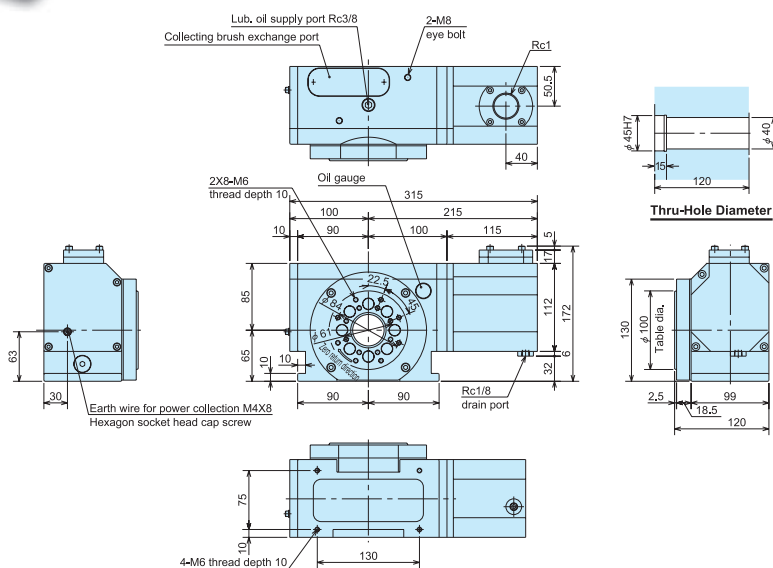


NC Rotary Table for Wire-cut EDM

DM100



Dimensional drawing



DM100 Features

- Compact • Lightweight
- Corresponds to Waterproof and Rustproof Specifications
- Through Hole of 40mm will accommodate a long workpiece

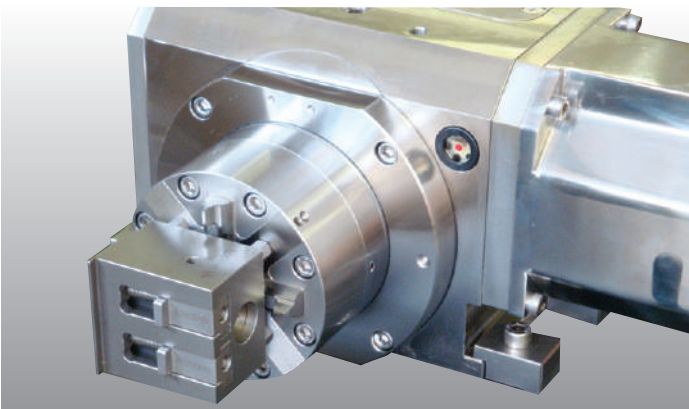
Specification table

Table dia.(mm)	Thru-Hole dia.		Centre Height mm	Gear Ratio	Max. Speed min ⁻¹	Min. Speed min ⁻¹	Indexing Accuracy sec.	Repeatability sec.	Weight kg	Max. Work Diameter kg
	Face Plate mm	Spindle mm								
φ 100	45	40	65	1/120	3.0	0.04	30	5	20	20

※The above specification and dimensions refer to a DM100 with KITAGAWA Controller. ※The above dimensions remain the same in case of a FANUC Motor type β 0.5/4000. If an alternative motor type is required, please contact us for further details. ※Specifications and dimensions are subject to alteration without notice.



EROWA®



EROWA Features

Chuck, mounted on Kitagawa Divider

The EROWA Chuck is operated pneumatically and can only be opened when pressure is applied.

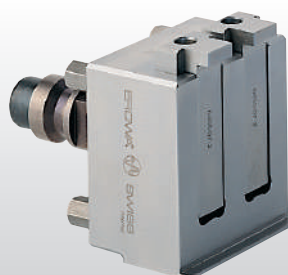
ER-043123 ITS chuck 100 P Inox without base plate

- **Version:** Steel, hardened, INOX
- **Clamping power:** 5000N
- **Connections:** At the rear, with two lines
- **Rotary Air Supply** mounted to the rear of the divider
- **Operation:** With control unit ER-008988
- **Repeated clamping accuracy:** < 0.002mm

EROWA Accessories for the KITAGAWA Divider

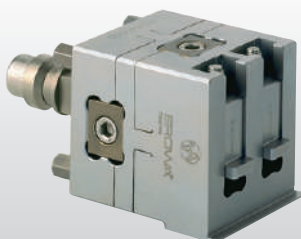
EROWA supports a large variety of workpiece holders suitable for Wire-EDM operation. All components are stainless and suited for application under water. This is a selection of the mostly used components for machining small parts and electrodes in the Wire - EDM application. More can be found at www.erowa.com.

ER-008814 Precision vise 0-100 UnoSet



- **Clamping range**
0-100 mm
- **Max. extension**
40mm at 100mm workpiece height.
- **Max.Load**
5 kg
- **Version**
Workpiece fixed. Including three sets of clamping jaws.

ER-008842 Pendulum vise 0-100 UnoSet



- **Clamping range**
0-100 mm
- **Max. extension**
40 mm at 100 mm workpiece height.
- **Max.Load**
5 kg
- **Version**
Workpiece adjustable in two axes. Including three sets of clamping jaws.

ER-016691 V-block holder UnoSet



- **Clamping range**
Parts up to ϕ 40 x H 150 mm
- **Max. Load**
1.5 kg
- **Application**
To clamp parts in prismatic slot. Parallel and angular precision 0.01 mm.

ER-014722 VeeVise TP UnoSet



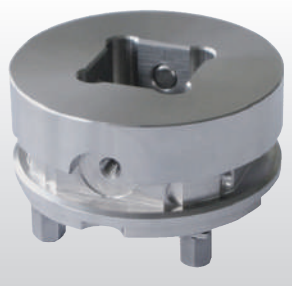
- **Clamping range**
0-100 mm
- **Max. extension**
40 mm with 100 mm part height.
- **Max.Load**
5 kg
- **Version**
For adjustable workpiece positioning in three axes. Continuously able to rotate around 360°. Set with three clamping jaws.

ER-055535 Flat vise 8mm UnoSet



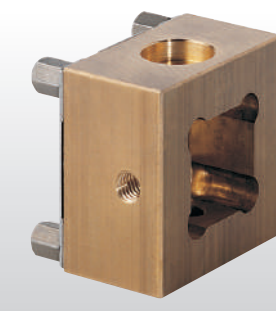
- **Version**
One movable jaw and one fixed jaw. Hardened, ground and corrosion-resistant.
- **Clamping range**
0-100 mm
- **Max. Load**
5 kg
- **Application**
Lateral clamping of workpieces machined outside of 0 - 100 mm.

ER-035209 Prisround ϕ 72



- **6 pieces**
- **Version**
Set of 6 units, system size ITS 50. Without chucking spigots.
- **Application**
To mount electrodes and workpieces with shafts of up to square 25 mm.

ER-009222 Prisround



- **12 pieces**
- **Version**
Set of 12 units, square 26.5 mm milled, including 2 setscrews for each unit.
- **Application**
To mount electrodes and workpieces with a base surface of more than 25 mm.
- **Mounting**
Insert and tighten setscrews. If necessary, center with spacer plate ER-010532.